

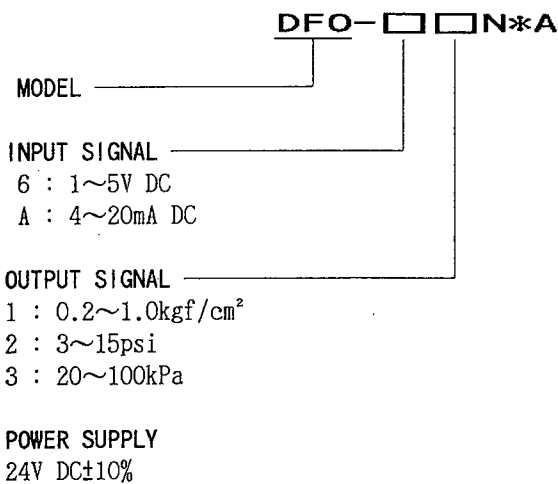
General Specifications

Model DFO
E/P Transducer

JUXTA

This nest storing type E/P transducer for DCS converts 1~5V DC or 4~20mA DC signal into 20~100kPa, 0.2~1.0kgf/cm² or 3~15psi pneumatic signals.

- Compact type, high quality by using semiconductor pressure sensor.
- Positional error is less than ±0.1%.

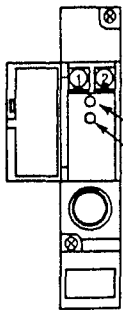


ORDERING INFORMATION

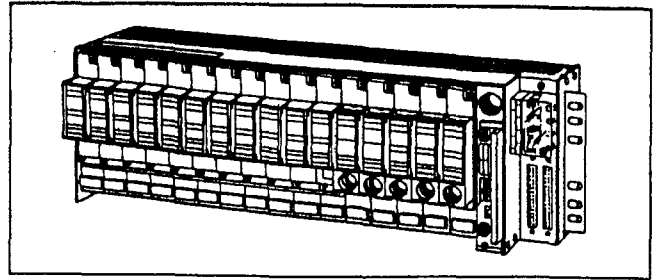
- Model Code : (Example) DFO-61N*A

Input & Output	
Input signal : 1~5V DC or 4~20mA DC	
Input resistance :	
1MΩ : Voltage input (100kΩ when power off)	
250Ω : Current input	
Output signal : 20~100kPa, 0.2~1.0kgf/cm ² or 3~15psi	
Monitor output :	
Outputs 1~5V DC [accuracy ± 1%] signal against 0~100% pneumatic pressure signal	
Zero point adjust range : ±5% of span	
Span adjust range : ±5% of span	
Standard Performance	
Accuracy rating : ±0.5% of span	
Max. air supply : 60Nl/min	
Max. air exhaust : 60Nl/min	
Insulation resistance : 100MΩ (at 500V DC) between input~power supply~aluminum diecast	
Voltage withstand : 500V AC/1 minute between input~power supply~aluminum diecast	
Temperature range : 0~50° C	
Humidity range : 5~90% RH (no condensation)	
Power voltage : 24V DC±10% (ripple content : 5% p-p or less)	
Effect of power voltage fluctuation : Less than ±0.1% of span for 24V DC±10% fluctuation	
Effect of ambient temperature change : Less than ±0.4% of span for 10° C change	
Effect of pneumatic pressure fluctuation : ±0.1% of span for fluctuation of 140kPa±10% (±0.1% of span for fluctuation of 1.4kgf/cm ² ±10%)	
Effect of installation position : ±0.1% of span for all directions	
Current dissipation : 24V DC 90mA	
Air dissipation : Less than 4Nl/min	
Mounting & Dimension & Accessories	
Mounting method : Store in exclusive nest (signal·power supply be connected through back board and connector)	
Wiring : [Connection to I/O card] By exclusive cable (connector connection)	
Air connection hole : Rc 1/4 (PT 1/4)	
External dimension : 130.6x23.6x126mm (HxWxD)	
Weight : About 300g	
Accessories : Tag number label ... 1	

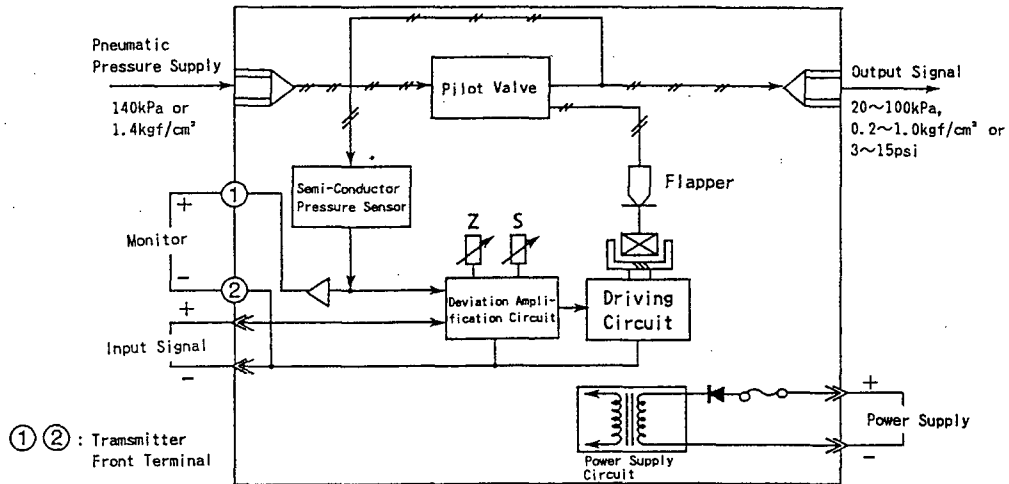
TERMINAL ARRANGEMENT



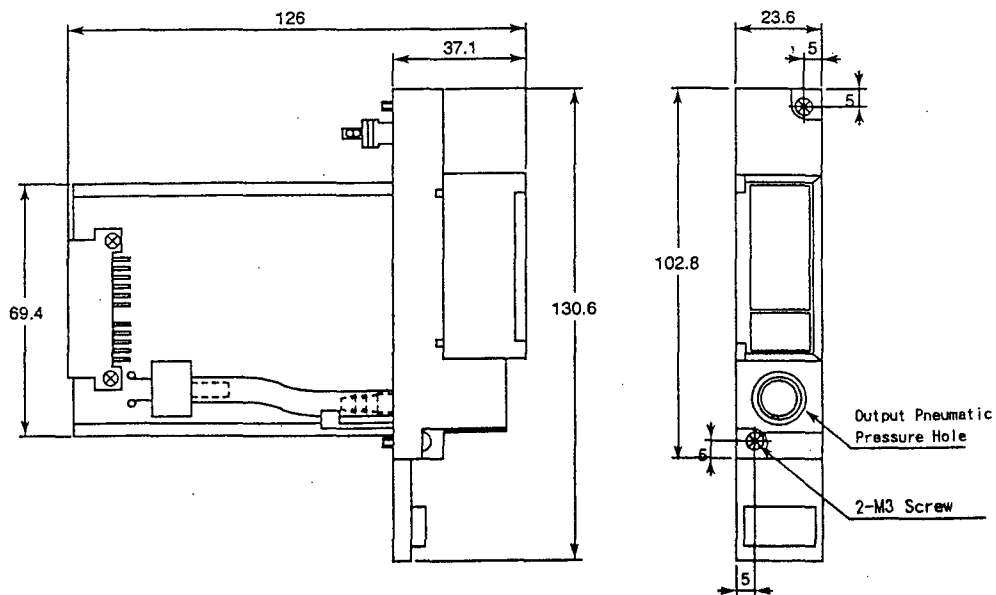
T.M.L.	REMARKS
1	MONITOR OUTPUT (+)
2	MONITOR OUTPUT (-)
⊙	OUTPUT 20~100kPa, 0.2~1.0kgf/cm ² or 3~15psi



BLOCK DIAGRAM



EXTERNAL DIMENSIONS



Subject to change without notice for grade up quality and performance